

# 2024 DIGITAL PROGRAM



# CUTTING EDGE OF TRANSPLANTATION

TRANSPLANT SUMMIT 2024

LEVERAGING  
INNOVATIVE  
TECHNOLOGY

TO SAVE AND IMPROVE  
MORE LIVES THROUGH  
TRANSPLANTATION

February 22-24, 2024

Arizona Biltmore

Phoenix, AZ

**AST**

AMERICAN SOCIETY OF  
TRANSPLANTATION®

For more information visit  
[www.myAST.org/meetings/CEoT](http://www.myAST.org/meetings/CEoT)

## General Information

### Registration and Badge Pick-Up

Location: Frank Lloyd Wright Prefunction Central

Thursday	9:00 am – 6:00 pm
Friday	7:00 am – 4:00 pm
Saturday	8:00 am – 2:00 pm

### Exhibits (Posters and Industry Displays)

Location: FLW Salon F

Thursday	2:45 pm – 3:15 pm
	5:00 pm – 6:30 pm
Friday	9:45 am – 10:15 am
	11:15 am – 11:45 am
	1:00 pm – 1:30 pm
	3:00 pm – 3:30 pm
Saturday	9:45 am – 10:15 am
	11:45 am – 12:15 pm
	1:30 pm – 2:00 pm

### Meals and Receptions Included

**Breakfast: Friday and Saturday**

A breakfast buffet will be provided during the Breakfast Symposium on Friday from 7:00 AM – 8:15 AM and Saturday morning from 7:00 AM – 7:45 AM. Please join us in the Frank Lloyd Wright Ballroom Salons A-E

**Lunch: Friday and Saturday**

A lunch buffet will be provided by the AST during the Lunch Symposiums on Friday from 11:45-1:00 PM and Saturday from 12:15-1:30 PM. Please join us in the Frank Lloyd Wright Ballroom Salon A-E

### Receptions

**Thursday 5:00 PM – 6:30 PM**

**Welcome Reception and Poster Session**

Join your colleagues for a warm welcome to the CEoT meeting. View abstract posters, visit the exhibit hall, and enjoy ample food and drinks with the AST.

Location: FLW Salon F

**Saturday, 4:00 PM – 5:45 PM**

**Closing Reception**

Location: Paradise Pool

Conclude your CEoT experience by winding down with your colleagues.

\*Breaks will also be provided throughout the meeting. Please visit the hotel concierge or the AST registration desk for dining suggestions for dinner on Thursday and Friday evenings.

### Wi-fi

Network Name: CSL  
Password: CEOT2024

### Name Badge

All attendees must wear the AST-provided name badge to gain access to CEoT events and sessions.

# 2024 CEoT MEETING SUPPORTERS

This educational activity is made possible with educational grants and support from the following companies:



## 2024 AST Supporter & Exhibitor Information

### Bridge for Life

For over a decade, Bridge to Life has been the trusted, go-to brand in the organ transplant community and recognized global leader in organ preservation and perfusion solutions. In addition to its commercialized solutions business, Bridge to Life has a machine perfusion product for livers in development for the US and commercialized in the EU.

### CareDx, Inc.

CareDx is committed to improving transplant patient outcomes by providing innovative and intelligent solutions throughout the entire patient journey. With 25 years of commitment to transplant patients and care teams, we have developed close partnerships across the transplant ecosystem that grow stronger every day.

### CSL

For over 100 years, CSL has delivered on its promise to discover and develop innovative life-changing therapies to address many of the world's most serious and rare disorders.

CSL recognizes that the transplant community continues to face significant challenges in both solid organ and stem cell transplantation. We look to apply our leadership, experience, and discoveries in immunology and autoimmune diseases to help patients who require, or have received a transplant.”

### Eurofins Transplant Diagnostics

#### INTEGRATE

We harness the power of our network of companies to deliver comprehensive solutions across the transplant spectrum.

#### INNOVATE

We never stop moving forward and are always looking for solutions that will solve the complex challenges of tomorrow.

#### INFORM

We empower patients and providers to make informed decisions about current treatments and future therapies.

Meeting the needs of transplant patients and providers is a challenge unlike another. From pre- to post-transplant, we're equipped with testing solutions that can do just that.

### Kamada

Established over three decades ago, Kamada is a global biopharmaceutical company focused on developing and distributing innovative specialty plasma therapies. We offer a broad range of hyperimmune therapies that provide passive immunity to various infectious agents, focusing on areas of high unmet medical need, including transplantation, infectious disease, and hematology.

### Mallinckrodt

Mallinckrodt is a global business consisting of multiple wholly owned subsidiaries that develop, manufacture, market, and distribute specialty pharmaceutical products and therapies. The company's Specialty Brands reportable segment's areas of focus include autoimmune and rare diseases in specialty areas like neurology, rheumatology, hepatology, nephrology, pulmonology, ophthalmology, and oncology; immunotherapy and neonatal respiratory critical care therapies; analgesics; cultured skin substitutes and gastrointestinal products. Its Specialty Generics reportable segment includes specialty generic drugs and active pharmaceutical ingredients. To learn more about Mallinckrodt, visit [www.mallinckrodt.com](http://www.mallinckrodt.com)

### MedSleuth

MedSleuth BREEZE and KidneyMatchgrid KPD software platform helps increase transplant referral and living donor volume through streamlining transplantation for patients and their caregivers.

### Merck

At Merck, known as MSD outside of the United States and Canada, we are unified around our purpose: We use the power of leading-edge science to save and improve lives around the world. For more than a century, we've been at the forefront of research, bringing forward medicines, vaccines and innovative health solutions for the world's most challenging diseases.

### Natera

Natera provides advanced DNA technology that enables transplant providers to deliver quality, personalized care. As a diagnostics company with proprietary bioinformatics and molecular technology, we've performed more than 3 million cfDNA tests and are dedicated to improving kidney care for good. Learn more at [natera.com/organ-health](http://natera.com/organ-health).

### Novartis

Novartis is an innovative medicines company. Every day, we work to reimagine medicine to improve and extend people's lives so that patients, healthcare professionals and societies are empowered in the face of serious disease. Our medicines reach more than 250 million people worldwide.

## Paragonix Technologies

Paragonix Technologies is a leading developer, manufacturer, and service provider in the organ transplant industry, establishing a novel approach to preservation that represents a significant improvement over the traditional standard of care.

Paragonix Advanced Organ Preservation devices combine clinically-proven, stable cooling techniques with digital tracking and monitoring technologies to provide clinicians complete control and oversight throughout the donor organ journey. The clinical impact of Paragonix preservation technology is reinforced by the GUARDIAN clinical registries, the largest database of organ preservation data in the world that analyzes post-transplant outcomes in transplant recipients.

## Pirche

Pirche is a technology leader in the application of AI to molecular medicine and has developed an exclusive epitope matching technology for risk assessment which may lead to improvements in organ allocation, management of long term immunosuppression, and selection of induction therapies. The technology is redefining compatibility risk assessment as this is the prerequisite for foreign tissues to successfully enter the body and be accepted by the recipient immune system.

## Sanofi

We are an innovative global healthcare company, driven by one purpose: we chase the miracles of science to improve people's lives. Our team, across some 100 countries, is dedicated to transforming the practice of medicine by working to turn the impossible into the possible. We provide potentially life-changing treatment options and lifesaving vaccine protection to millions of people globally, while putting sustainability and social responsibility at the center of our ambitions.

## Takeda

Takeda is a global, values-based, R&D-driven biopharmaceutical leader headquartered in Japan, committed to discover and deliver life-transforming treatments, guided by our commitment to patients, our people and the planet. [www.takeda.com](http://www.takeda.com)

## Thermo Fisher Scientific

As part of Thermo Fisher Scientific, we offer products and services to advance the science of transplant diagnostics. Our solutions help transplant labs and clinical teams provide personalized care across the patient experience.

Dr. Paul Terasaki founded One Lambda™ in 1984 with the goal of developing tests to improve how laboratories match and monitor transplant recipients and donors. Since then, our HLA typing and antibody detection assays have been trusted by transplant laboratories worldwide. Clinicians also rely on data from our patient monitoring tests to make important decisions about post-transplant therapies.

## Trinity Medical Solutions

Trinity Medical Solutions, a Blade Urban Air Mobility Company, provides logistics and organ placement services with a singular focus on reducing the organ shortage through exceptional service to Transplant Centers, Organ Procurement Organizations, and industry partners throughout the country. We are a proven partner with decades of experience in serving the transplant community.

## Veloxis Pharmaceuticals, Inc.

Veloxis Pharmaceuticals, Inc., an Asahi Kasei company, is a fully integrated specialty pharmaceutical company committed to improving the lives of transplant patients. Headquartered in Cary, North Carolina, USA, Veloxis is focused on the global development and commercialization of medications utilized by transplant patients and by patients with serious related diseases. For further information, please visit [Veloxis.com](http://Veloxis.com).

## Verici Dx

Verici Dx, commercializes kidney transplant tests based upon RNA signatures enabling early, dynamic and personalized patient information for clinicians.

We offer pre and post-transplant prognosis tests forming a kidney transplant platform for personalized patient and organ response risk to assist clinicians in medical management for improved patient outcomes. The underlying technology is based upon artificial intelligence assisted transcriptomic analysis to provide RNA signatures focused upon the immune response and other biological pathway signals critical for transplant prognosis of risk of injury, rejection and graft failure from pre-transplant to late stage.

# Program Planning Committee

**David P. Foley, MD, FACS, FAST, FAASLD**  
Chair  
*University of Wisconsin*

**Rachel Patzer, PhD, FAST**  
Co-Chair  
*Regenstrief Institute*

**Deborah Adey, MD**  
Co-Chair Elect  
*University of California San Francisco*

**Vineeta Kumar, MD, FAST**  
Past-Chair  
*University of Alabama at Birmingham*

**Roy D. Bloom, MD**  
*Hospital of the University of Pennsylvania*

**Andres Duarte-Rojo, MD, MS, DSc**  
*Northwestern University*

**Allyson Hart, MD, MS**  
*Hennepin Healthcare Research Institute*

**Deborah Levine, MD**  
*Stanford University*

**Lisa McElroy, MD, MS**  
*Duke University*

**Sumit Mohan, MD**  
*Columbia University*

**Sean Pinney, MD, FAST**  
*Icahn School of Medicine at Mount Sinai*

**James Rodrigue, PhD, FAST**  
*Harvard Medical School*

**Joanna Schaenman, MD, PhD, FAST**  
*David Geffen School of Medicine at UCLA*

**Marina Serper, MD**  
*University of Pennsylvania*

**Stuart Sweet, MD, PhD**  
*Washington University St. Louis*

**David Taber, PharmD**  
*Medical University of South Carolina*

**Ali Zarrinpar, MD, PhD**  
*University of Florida*

## Invited Faculty and Moderators



Scan the QR Code to view COI disclosures for all invited faculty.

**Benjamin Adam, MD, FRCPC**  
*University of Alberta Hospital*

**Demilade Adedinsewo, MD, MPH**  
*Mayo Clinic*

**Sandra Amaral MD, MHS**  
*Children's Hospital of Philadelphia*

**John Belperio, MD**  
*University of California Los Angeles Health*

**Mamatha Bhat, MD, MSc, PhD, FRCPC**  
*Toronto General Hospital Research Institute*

**Aleah Brubaker, MD, PhD**  
*University of San Diego*

**Catherine Butler, MD, MA**  
*University of Washington*

**Anthony Celi MD, MPH, MPH, MSc**  
*Massachusetts Institute of Technology*

**Benjamin Collins, MD, MS, MA**  
*Vanderbilt University*

**Kristopher Croome, MD**  
*Mayo Clinic Florida*

**Marcelo Cypel, MD, MSc, FACS, FRCSC**  
*University Health Network Toronto*

**Earnest Davis**

**Jesse Ehrenfeld, MD, MPH**  
*Medical College of Wisconsin*

**Kevin Fowler**

**Joseph Gaut, MD, PhD**  
*Washington University School of Medicine  
in St. Louis*

**Loren Gragert, PhD, A(ACHI)**  
*Tulane University*

**Alin Gragossian, DO, MPH**

**John Greenland, MD, PhD**  
*University of California San Francisco*

**Steven Hays, MD**  
*University of California, San Francisco*

**Joseph Hillenburg**

**Atul Humar, MD, MSc, FRCPC**  
*Toronto General Hospital*

**Ana Iltis, PhD**  
*Wake Forest University*

**Susie Joseph, MD**  
*Washington University School of Medicine  
in St. Louis*

**Stephen Juvet, MD, PhD**  
*University Health Network Toronto*

**Tiffany Kaiser, PharmD**  
*University of Cincinnati*

**Kiran Khush, MD, MAS**  
*Stanford University*

**Stuart Knechtle, MD**  
*Duke University Medical Center*

**Megan Levings, PhD**  
*Child & Family Research Institute*

**Roslyn Mannon, MD, FAST, FASN**  
*University of Nebraska Medical Center*

**Valeria Mas, PhD**  
*University of Maryland*

**Molly McCarthy**

**Lisa McElroy, MD, MS**  
*Duke University*

**Melissa McQueen**  
*Transplant Families*

**Satish Nadig, MD, PhD**  
*Northwestern University*

**Scott Nyberg, MD, PhD**  
*Mayo Clinic*

**David Page, PhD**  
*Duke University*

**Victoria Palafox, RN**

**Cory Schaffhausen, MS, PhD**  
*Hennepin County Medical Center*

**Andrea Schlegel, MD**  
*Cleveland Clinic*

**Jesse Schold, PhD, MStat, MEd**  
*University of Colorado Anschutz Medical  
Campus*

**Anoop Sheshadri, MD**  
*University of California San Francisco*

**Ashley Spann, MD, MSACI**  
*Vanderbilt University Medical Center*

**Josef Stehlik, MD, MPH**  
*University of Utah School of Medicine*

**Darren Stewart, MS**  
*New York University Langone Health*

**John Trahanas, MD**  
*Vanderbilt University*

**Gary Weissman, MD, MSHP**  
*University of Pennsylvania*

**Melana Yuzefpolskaya, MD**  
*Columbia University*

**Ali Zarrinpar, MD, PhD**  
*University of Florida*

# AST Board of Directors

**Josh Levitsky, MD, MS, FRCPC, FAST**  
President  
*Northwestern University  
Feinberg School of Medicine*

**Deepali Kumar, MD, MSc, FRCPC, FAST**  
Past President  
*University of British Columbia*

**Jon Kobashigawa, MD, FAST**  
President-Elect  
*Cedars-Sinai Smidt Heart Institute*

**David Foley, MD, FACS, FAST, FAASLD**  
Treasurer  
*University of Wisconsin School  
of Medicine and Public Health*

**Nicole Turgeon, MD, FACS**  
Secretary  
*The University of Texas*

**Marie Chisholm-Burns, PharmD, PhD,  
MPH, MBA, FAST**  
*Oregon Health & Science University*

**Vineeta Kumar, MD, FAST**  
*University of Alabama at Birmingham*

**Mandy Ford, PhD, FAST**  
*Emory University*

**Raymund Razonable, MD, FAST**  
*Mayo Clinic College of Medicine  
& Science*

**Deirdre Sawinski, MD, FAST**  
*New York Presbyterian/Weill Cornell  
Medical Center*

**Anne Dipchand, MD, FRCPC**  
*Hospital for Sick Children, University  
of Toronto*

**John Friedewald, MD, FAST**  
*Northwestern University*

**Matthew Cooper, MD, FACS, FAST**  
*Medical College of Wisconsin*

**Shelley Hall, MD, FACC, FHFSa, FAST**  
*Baylor University Medical Center*

# AST Staff

**Cynthia Reilly**  
*Chief Executive and Managing Director*

**Chad Waller**  
*Associate Executive Director*

**JoAnn Gwynn**  
*Chief Development Officer*

**Melissa Patterson**  
*Director of Operations*

**Sauna O'Brien, MBA**  
*Director of Communications and Marketing*

**Julie Atkinson, MA**  
*Director of Membership*

**Jennifer Gillespie**  
*Director of Meetings*

**Charlotte Aguilar**  
*Meeting Manager*

**Emerson Steffe**  
*Meeting Coordinator*

**Bella Lee**  
*Administrative Assistant,  
Meetings & Development*

**Katherine Hamilton**  
*Development Manager,  
Corporate Partnerships*

**Brooke Iarkowski**  
*Transplant Community  
Program Manager*

**Alexandra Maldonado**  
*Executive Administrative Assistant*

**Olivia Snow**  
*Senior Communities of Practice Manager*

**Raffaella Pace**  
*Senior Communities of Practice Manager*

**Andria White, MS, MBA**  
*Controversies Conference Manager*

**Brian Valeria**  
*Education Program Manager*

**Elisabeth Gray**  
*Membership Coordinator*



## Thursday, February 22

1:30 PM

### Cutting Edge of Transplantation Welcome Remarks\*

**Location:** FLW Salon A-E

*Josh Levitsky, MD, MS, FAST, FAASLD, AST President*

*David Foley, MD, FACS, FAST, FAASLD, CEoT Planning Committee Chair*

*Rachel Patzer PhD, MPH, CEoT Planning Committee Co-Chair*

1:45 PM – 2:45 PM

### Session 1: Setting the Stage: The Promise of Expanding Technology in Transplantation\*

**Location:** FLW Salon A-E

**Moderators:** *Stuart Sweet, MD, PhD & Rachel Patzer PhD, MPH*

#### 1. Connect to Purpose – the Importance of Technology Advances in Transplant from a Patient Perspective

*Molly McCarthy*

#### 2. Transplant Technology: Where Are We Now?

*Roslyn Mannon, MD, FAST, FASN*

#### 3. Transplant Technology: Where Do We Go From Here?

*Stuart Knechtle, MD*

2:45 PM – 3:15 PM

### Break

Science and Innovation Theater†

*Sponsored by Pirche*

**Location:** Exhibit Hall, FLW Salon J

3:15 PM – 4:45 PM

### Session 2: Artificial Intelligence\*

**Location:** FLW Salon A-E

**Moderators:** *Vineeta Kumar, MD, FAST & Jim Rodrigue, PhD*

#### AI in Transplant: A Patient Perspective

*Alin Gragossian, DO, MPH*

#### 1. Engaging with AI in Healthcare

*Benjamin Collins, MD, MS, MA*

#### 2. AI in Solid Organ Transplantation:

##### An Explorative Overview of Current Applications

*Ali Zarrinpar, MD, PhD*

## Thursday, February 22 (continued)

### 3. Practical Applications of AI

#### a. Implementation of Deep Learning for Rejection and Risk Assessment

*Demilade Adedinsewo, MD, MPH*

#### b. Advancements and Applications of Visual Intelligence in Transplantation

*Joe Gaut, MD, PhD*

#### Panel Discussion

5:00 PM – 6:30 PM

#### Welcome Reception and Poster Session†

*Sponsored by Eurofins Transplant Diagnostics*

**Location:** Exhibit Hall, FLW Salon F

## Friday, February 23

7:00 AM – 8:15 AM

#### Satellite Breakfast Symposium†

*Featuring the OPTN Expeditious Task Force*

**Location:** FLW Salon A-E

8:15 AM – 9:45 AM

#### Session 3: Therapeutics and Diagnostics†

**Location:** FLW Salon A-E

**Moderators:** *Roy Bloom, MD & Joanna Schaeenman, MD, PhD*

#### Patient Introduction

*Kevin Fowler*

#### 1. New Molecular Approaches to Assess Immune Status: Finding the Right Balance

*Benjamin Adam, MD, FRCPC*

#### 2. Cutting-Edge ID Diagnostics and Therapeutics

*Atul Humar, MD*

#### 3. Bioengineering the Immune System to Prevent Rejection

*Megan Levings, PhD*

#### 4. New Technologies in Drug Delivery

*Satish Nadig, MD, PhD*

#### Panel Discussion

9:45 AM – 10:15 AM

#### Break

Science and Innovation Theater†

*Sponsored by Eurofins Transplant Diagnostic*

**Location:** Exhibit Hall, FLW Salon J

\*Continuing education credit offered. See separate packet. †No continuing education credit offered. This is not an official function of the CEoT meeting and is not endorsed by the AST.

## Friday, February 23 (continued)

- 10:15 AM – 11:15 AM** **Keynote Speaker\***  
**Location:** FLW Salon A-E  
*Jesse Ehrenfeld, MD, MPH*
- 11:15 AM – 11:45 AM** **Networking, Exhibitor Break**
- 11:45 AM – 1:00 PM** **Satellite Lunch Symposium†**  
*Sponsored by Natera*  
**Location:** FLW Salon A-E
- 1:00 PM – 1:30 PM** **Break**  
 Doggie Den†  
*Sponsored by Sanofi*  
**Location:** FLW Foyer
- 1:30 PM – 3:00 PM** **Session 4: Telemedicine and Remote Patient Monitoring\***  
**Location:** FLW Salon A-E  
**Moderators:** *Dave Taber, PharmD & Sean Pinney, MD*
- Patient Experience with Emerging Technologies**  
*Melissa McQueen*
- 1. Empowering Patients through Remote Monitoring: Detecting Problems Before They Start**  
*Tiffany Kaiser, PharmD*
  - 2. The Chatbot Will See You Now: Interacting with Artificial Intelligence**  
*Steven Hays, MD*
  - 3. Innovative Technologies in Medication Adherence Monitoring**  
*Sandra Amaral, MD, MHS*
  - 4. Telerehabilitation to Improve Functional Status**  
*Anoop Sheshadri, MD*
- Panel Discussion**
- 3:00 PM – 3:30 PM** **Break**  
 Science and Innovation Theater†  
*Sponsored by Kamada*  
**Location:** Exhibit Hall, FLW Salon J

## Friday, February 23 (continued)

3:30 PM – 5:00 PM

### Session 5: Organ Optimization and Replacement Technologies†

**Location:** FLW Salon A-E

**Moderators:** *Lisa McElroy, MD, MS & Ali Zarrinpar, MD, PhD*

#### Patient Talk: Organ Optimization to Enhance the Patient Experience

*Victoria Palafox, RN*

##### 1. Enhancing Organ Function in Ex Vivo Machine Perfusion

*Marcelo Cypel, MD, MSc, FACS, FRCSC*

##### 2. Building and Rebuilding Organs

*Scott Nyberg, MD, PhD*

##### 3. NRP Above and Below the Diaphragm

###### a. Thoracic: Thoracic NRP in 2023 and Beyond

*John Trahanas, MD*

###### b. Abdominal: Leading the Abdominal Consortium for NRP

*Aleah Brubaker, MD, PhD*

##### Panel Discussion

5:00 PM – 5:15 PM

**Break**

5:15 PM – 6:45 PM

### Transplant Visionaries Challenge†

*Sponsored by Sanofi*

**Location:** FLW Salon A-E

## Saturday, February 24

7:00 AM – 7:45 AM

### Satellite Breakfast Symposium†

*Sponsored by Novartis*

**Location:** FLW Salon A-E

8:15 AM – 9:45 AM

### Session 6: Breakouts\*

#### Kidney Transplantation:

#### Leveraging Technology in Getting to a “Yes”

**Location:** FLW Salon A-E

**Moderators:** *Roy Bloom, MD & Deb Adey, MD*

##### 1. Remote Prehab (Remote Physical Therapy)

*Anoop Sheshadri, MD*

##### 2. Healthcare System Silos Along the Pathway to Kidney Transplant

*Catherine Butler, MD, MA*

\*Continuing education credit offered. See separate packet. †No continuing education credit offered. This is not an official function of the CEoT meeting and is not endorsed by the AST.

## Saturday, February 24 (continued)

### 3. Shared Decision-Making Tools Around Organ Acceptance

*Darren Stewart, MS*

### 4. Using AI for HLA Matching (Opportunities in Histocompatibility)

*Loren Gragert, PhD, A(ACH)*

#### Panel Discussion

#### Technological Innovations in Liver Transplantation: Enhancing Outcome Prediction and Organ Use

Location: FLW Salon G

Moderators: *Marina Serper, MD & Andres Duarte, MD, MS, DSc*

### 1. New Frontiers in Clinical Prediction Modeling in Liver Transplant Outcomes

*Mamatha Bhat, MD, MSc, PhD, FRCPC*

### 2. Clinical Applications of Biomarkers to Liver Transplant

*Valeria Mas, PhD*

### 3. Viability Assessment of The Deceased Donor Livers

*Kristopher Croome, MD*

### 4. Innovative Therapeutics During Machine Perfusion: Where Are We Headed

*Andrea Schlegel, MD*

#### Panel Discussion

#### Heart Breakout: Transformation of Heart Transplant through Technological Advancement

Location: FLW Salon H

Moderators: *Sean Pinney, MD & Jon Kobashigawa, MD*

### 1. Organ Acquisition, Storage, and Perfusion

*Josef Stehlik, MD, MPH*

### 2. Biological Alternatives to Allotransplantation

*Susie Joseph, MD*

### 3. Mechanical Alternatives to Heart Transplantation

*Melana Yuzefpolskaya, MD*

### 4. Molecular Testing and Heart Transplantation Moving Beyond the Diagnosis of Rejection

*Kiran Khush, MD, MAS*

#### Panel Discussion

## Saturday, February 24 (continued)

### Beyond Transbronchial Biopsy: New Technologies to Identify Lung Allograft Rejection and Infection

**Location:** FLW Salon I

**Moderators:** *Stuart Sweet, MD, PhD & Debbie Levine, MD*

#### 1. All you Need is Blood

*John Belperio, MD*

#### 2. No, you Need BAL too

*Stephen Juvet, MD, PhD*

#### 3. Biopsy or Brushing is Essential

*John Greenland, MD, PhD*

#### Panel Discussion

9:45 AM – 10:15 AM

#### Break

Science and Innovation Theater†

*Sponsored by CareDx*

**Location:** Exhibit Hall, FLW Salon J

10:15 AM – 11:45 AM

### Session 7: Informatics and Decision Support Systems\*

**Location:** FLW Salon A-E

**Moderators:** *Allyson Hart, MD, MS & Marina Serper, MD*

#### Patient Introduction: The Importance of Data to Patients

*Earnest Davis Jr., PhD, MHSA*

#### 1. Integrating Data into Clinical Care and Decision Making: The Role of Informatics in Medical Care

*Ashley Spann, MD, MSACI*

#### 2. Making the Electronic Health Records Work for Us: Leveraging EHR Data in Transplantation

*Lisa McElroy, MD, MS*

#### 3. Lessons Learned Integrating Data into Decision-Making in Transplantation – What is Next in transplantation?

*Jesse Schold, PhD, MStat, MEd*

#### 4. Human-Centered Design: Making Analytic Support Work with the People Using it

*Cory Schaffhausen, MS, PhD*

#### Panel Discussion

\*Continuing education credit offered. See separate packet. †No continuing education credit offered. This is not an official function of the CEoT meeting and is not endorsed by the AST.

## Saturday, February 24 (continued)

11:45 AM – 12:15 PM **Networking, Exhibitor Break**

12:15 PM – 1:30 PM **Satellite Lunch Symposium†**  
*Sponsored by Veloxis Pharmaceuticals*  
**Location:** FLW Salon A-E

1:30 PM – 2:00 PM **Break**  
Doggie Den†  
*Sponsored by Paragonix*  
**Location:** FLW Foyer

**2:00 PM – 3:30 PM** **Session 8: Technology Innovations in Transplantation:  
Ethical, Legal, and Social Challenges\***  
**Location:** FLW Salon A-E  
**Moderators:** *Deborah Adey, MD & Sumit Mohan, MD*

**Intro: Community Perspectives**  
*Joseph Hillenburg*

1. **Technology is Wonderful: What Could Possibly Go Wrong?**  
*Gary Weissman, MD, MSHP*
2. **Legal and Regulatory Considerations**  
*Ana Iltis, PhD*
3. **Emerging Technologies: Potential for Perpetuating Bias and Inequity**  
*Leo Anthony Celi, MD, MPH, MSc*
4. **AI and Machine Learning: Looking Behind the Curtain**  
*David Page, PhD*

**Panel Discussion**

**3:30 PM** **Summary of Meeting**

**4:00 PM** **Closing Reception†**  
**Location:** Paradise Pool

\*Continuing education credit offered. See separate packet. †No continuing education credit offered. This is not an official function of the CEoT meeting and is not endorsed by the AST.

# Transplant Visionaries Challenge Winners

Join us Friday, February 23 at 5:15 PM to cast your vote for the most innovative program.

**Mallika Gupta, MD, FASN**  
*KUMC*

A Multifaceted Approach to Transplant Education: Infographics, Campaigns, and Promotions

**Andrew Sage, M.S.c, PhD**  
*University Health Network*

Advanced Artificial Intelligence for Human Ex Vivo Lung Perfusion using Digital Twins

**Rose Mary Attieh, MD**  
*Mayo Clinic*

Allograft survival prediction using deep neural networks

**Marcelo Cypel, MD, M.S.c, FACS, FRCS**

*University Health Network*  
Developing Universal Blood Type Donor Organ

**Vijay Gorantla, MD, PhD**  
*Atrium Health Wake Forest Baptist Medical Center*

A Novel Point-of-Care Immunomonitoring Multiplexed Assay for Realtime Kidney Injury and Tacrolimus (MARKIT) Biosensor for Solid Organ Transplantation

***This activity is generously supported by funding from Sanofi.***





**CUTTING EDGE OF  
TRANSPLANTATION**

TRANSPLANT SUMMIT 2024

**AST** AMERICAN SOCIETY OF  
TRANSPLANTATION

**LEVERAGING  
INNOVATIVE  
TECHNOLOGY**

TO SAVE AND IMPROVE MORE LIVES  
THROUGH TRANSPLANTATION

# YOUNG INNOVATOR AWARD WINNERS:

**Kevin Harris**  
Henry Ford Health  
Detroit, MI

**Rachana Pudukollu**  
Mayo Clinic  
Phoenix, AZ

**\*Maggie E. Jones-Carr**  
University of Alabama at  
Birmingham Heersink School  
of Medicine  
Birmingham, AL

**Jes M. Sanders**  
Northwestern University  
Feinberg School  
of Medicine  
Chicago, IL

**Daniel Miklin**  
North Shore University Hospital  
Manhasset, NY

**Srilekha Sridhara**  
University of Arizona  
Tucson, AZ

**\*Aung S. Naing**  
Eastern Virginia Medical School  
Norfolk, Virginia

**Mario A. Torres**  
Dartmouth Health  
Hanover, NH

*\* YIA Winners who are sponsored by PeerJ*

# CONNECT AND LEARN

Join us for breakfast, lunch, and breaks  
to continue your educational journey.

**NO RESERVATIONS REQUIRED**

## Thursday, February 22

### Science and Innovation Theater†

2:45 PM – 3:15 PM

Exhibit Hall, FLW Salon J

Sponsored by *PIRCHE*

## Friday, February 23

### Breakfast Symposium†

7:00 AM – 8:15 AM

FLW Salon A-E

Featuring the *OPTN Expeditious Task Force*

### Science and Innovation Theater†

10:00 AM – 10:30 AM

Exhibit Hall, FLW Salon J

Sponsored by *Eurofins Transplant Diagnostics*

### Lunch Symposium†

11:45 AM – 1:00 PM

FLW Salon A-E

Sponsored by *Natera*

### Science and Innovation Theater†

3:00 PM – 3:30 PM

Exhibit Hall, FLW Salon J

Sponsored by *Kamada*

## Saturday, February 24

### Breakfast Symposium†

7:00 AM – 7:45 AM

FLW Salon A-E

Sponsored by *Novartis*

### Science and Innovation Theater†

10:00 AM – 10:30 AM

Exhibit Hall, FLW Salon J

Sponsored by *CareDx*

### Lunch Symposium†

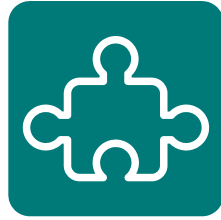
11:45 AM – 1:00 PM

FLW Salon A-E

Sponsored by *Veloxis*

Please visit the  
**CEoT Mobile  
App** for more  
information.

†No continuing education credits offered. This is not an official function of the CEoT Meeting and not endorsed by AST.



**PIRCHE<sup>®</sup>**  
match better.

**Product Theater:**  
**Empower The Match With Pirche**

**Presented By: Gaurav Gupta, MD**

**Chair, Department Of Nephrology**  
**Medical Director, Kidney Transplant, Virginia**  
**Commonwealth University, Richmond, VA**

**Date/Time: Feb 22, 2:45-3:15pm**





# Bold Aims. Smart Change.

## Pursuing Bold Aims to Increase Organ Transplants and Improve Efficiency

Please join us for a breakfast session at CCoT 2024  
Friday, February 23, 2024 | 7:00 AM – 8:15 AM  
Frank Lloyd Wright A-E



**Alden M. Doyle, MD**  
UVA Health



**Richard Formica, MD**  
Yale School of Medicine

While transplants and donations are increasing, so is the waitlist, organ non-use, and organ allocation out of sequence. These trends call for collaboration across the donation and transplant community to solve challenges creatively.

Join transplant nephrologists Dr. Alden Doyle and Dr. Richard Formica for a discussion about the OPTN Expeditious Task Force and its bold aim to reach 60,000 annual successful deceased donor organ transplants by the end of 2026, a 58% increase in deceased donor transplants over the next three years.

They will share updates on the task force's work to increase the use of all available organs, get each organ to the appropriate patient more efficiently and expedite the process of complex organ allocation.

Engage in this interactive session and give input on ideas the task force is developing, including proposals for rapid, small-scale trials to test a variety of innovative solutions.

Explore how your organization can actively contribute to this transformative mission.

---

The OPTN Expeditious Task Force was created by the OPTN Board of Directors in September 2023 to pursue accelerated change across the nation's organ donation and transplantation system, increase the number of lifesaving transplants by tackling the industry's biggest challenges of organ non-use and allocation out-of-sequence and improve the deceased donor allocation process. Membership includes transplant patients, patient and donor family members, organ donation and transplant clinicians, community advocates and others.





eurofins

Transplant  
Diagnostics

# THE PARADIGM OF PRECISION MEDICINE



James Fleming, PharmD, FAST  
Eurofins Transplant Genomics



Dr. Steve Kleiboeker  
Eurofins Clinical Diagnostics

## CMV INSIGHT T CELL IMMUNITY AND TRUGRAF KIDNEY GENE EXPRESSION TESTING

---

Science & Innovation Theater

Friday, February 23, 2023

9:45-10:15 AM

Frank Lloyd Wright Ballroom, Salon J

[WWW.EUROFINSTRANSPLANT.COM](http://WWW.EUROFINSTRANSPLANT.COM)



Prospera™  
Transplant assessment

# Built for Confident Decisions

CEoT 2024 | February 22-24  
Scottsdale, AZ | Arizona Biltmore



Satellite Lunch Symposium Sponsored by Natera

## New Trifecta Study Publication: Prospera™ dd-cfDNA Upheld as a Leading Indicator for Kidney Transplant Rejection

Friday, February 23 | 11:45 AM – 1:00 PM | Arizona Biltmore | Frank Lloyd Wright Ballroom, Salons A-E



**Sanjiv Anand, MD**

Medical Director, Living Kidney Donor Program  
Transplant Nephrologist  
*Intermountain Health – Transplant Services*



**Rodolfo Batarse, MD, FASN**

President and Nephrologist  
*Desert Kidney Care*



**Jonathan Bromberg, MD, PhD**

Vice Chair for Research, Department of Surgery  
*University of Maryland*

More evidence that elevated Prospera™ cfDNA levels may be an early indication for rejection—providing reason for closer surveillance. Now, two independent cohorts support this robust trend where rises in Prospera™ cfDNA levels are correlated with molecular signs of antibody-mediated rejection.

This is not an official function of the CEoT meeting and is not endorsed by the AST. Lunch will be provided by AST.

13011 McCallen Pass, Building A Suite 100 | Austin, TX 78753 | [natera.com](http://natera.com)

Prospera™ has been developed and its performance characteristics determined by the CLIA-certified laboratory performing the test. The test has not been cleared or approved by the US Food and Drug Administration (FDA). CAP accredited, ISO 13485 certified, and CLIA certified.  
© 2024 Natera, Inc. All Rights Reserved. OH\_FLYER\_CEOt-2024\_20240126\_NAT-8021457





**CEoT 2024**  
2/22-24 | PHOENIX, AZ

Kamada proudly presents the science and innovation theater:

## **Cutting-Edge Strategies Against CMV: Breakthroughs in Hyperimmune Therapy**

**Friday, February 23, 2024, | 3:00 – 3:30 PM MST**

**Frank Lloyd Wright Ballroom, Salon J, Arizona Biltmore Resort, Phoenix, AZ**

### **Speakers:**



**Dr. Lorenzo Zaffiri**

Associate Medical Director,  
Lung Transplant Program,  
Department of Medicine, Cedars-Sinai,  
Assistant Professor, Department of Medicine



**Winston Ally, Pharm D**

Director US Medical Affairs,  
Kamada

## **Join us**

For an insightful session exploring innovative strategies in combating CMV through hyperimmune therapy, and hear about emerging clinical data.

Come and meet our team at our booth at the exhibit hall and learn more about our transplantation portfolio.

For more information please contact: [winstona@kamada.com](mailto:winstona@kamada.com)

Please join us in...

# Unraveling the Role of the Complement System in Kidney Disease

**Saturday, February 24, 2024**

7:00 AM to 7:45 AM MST

Frank Lloyd Wright Salon A-E

Arizona Biltmore Hotel, Phoenix, AZ

**Srini Srinivas, MD, MBA, FAST**

Senior Medical Director, Nephrology  
Innovative Medicines US Medical Affairs  
Novartis Pharmaceuticals Corporation  
East Hanover, NJ

**Susan K. Lostetter, MMS, PA-C**

Medical Science Liaison, Director  
Innovative Medicines US Medical Affairs  
Novartis Pharmaceuticals Corporation  
East Hanover, NJ

Innovative Medicines US Medical Affairs, Novartis Pharmaceuticals Corporation is providing this information for scientific and educational purposes only.

1. Smith RJH et al. *Nat Rev Nephrol.* 2019;15(3):129-143.

2. Rizk DV et al. *Kidney Int Rep.* 2023;8(5):968-979.



Complement system dysregulation has the potential to cause progressive kidney damage<sup>1,2</sup>

Access additional, innovative kidney disease education resources at <https://renal.hallsofscience.com>.







# Join CareDx at the Cutting Edge of Transplantation (CEoT) 2024 Transplant Summit

Thursday-Saturday, February 22-24, 2024  
Phoenix, Arizona



Barbara P, kidney transplant recipient

## CareDx Sponsored Science & Innovation Theater

### Leveraging Multi-Modality with Molecular Diagnostics and Digital Tools to Improve Transplant Risk Assessment

**Saturday, February 24 | 9:55 - 10:15 AM MST**

Arizona Biltmore Resort | 2400 E Missouri Ave, Phoenix, AZ 85016  
Frank Lloyd Wright Ballroom, Salon J

CareDx Medical Affairs invites you to learn from experts about how top transplant centers are utilizing molecular and digital tools for enhanced clinical insights, aiming for improved decision-making across the transplant journey.

**REGISTER**



<https://bit.ly/CareDxCEoT2024>



**Robert N. Woodward,**  
PhD  
CareDx



**Kiran K. Khush,**  
MD, MAS  
Stanford University



**Sapna Shah, MD**  
University of  
Southern California

## Connect With Our Team

**All Day, Thursday February 22 – Saturday February 24** | Arizona Biltmore Resort  
2400 E Missouri Ave, Phoenix, AZ 85016 | Exhibit Hall and Networking Den

Meet our team and share more about how we can support your innovation in transplant patient care.

Please Join Us for a Lunch Presentation at CEoT 2024

# REAL WORLD APPLICATION OF ENVARSUS XR<sup>®</sup> —TRANSITIONS OF CARE

**Saturday, February 24, 2024**

**12:15 PM – 1:30 PM**

## **Arizona Biltmore**

Frank Lloyd Wright Ballroom  
(Salons A-E)  
Phoenix, Arizona

## **Alexander Wiseman, MD**

Executive Director, Kidney Transplantation  
Advent Health Transplant Institute  
Denver, Colorado

## **Christina Klein, MD, FAST**

Transplant Nephrologist and Medical Director  
Piedmont Transplant Institute  
Atlanta, Georgia

## **Program Description**

Please join Drs Christina Klein and Alexander Wiseman for a dynamic case-based discussion in which they explore evolving treatment paradigms—including strategies to facilitate the safe and efficient transfer of care—for kidney transplant recipients.

This is an industry-sponsored session. CE/CME credit will not be available. **Only attendees of CEoT may attend.** Spouses or other guests are not permitted. The speakers are presenting on behalf of Veloxis Pharmaceuticals, Inc., and must present information in compliance with FDA requirements.

This is not an official function of CEoT Meeting and not endorsed by AST. Lunch will be provided by AST.

## **INDICATIONS AND USAGE**

ENVARUSUS XR is indicated for the prophylaxis of organ rejection in de novo kidney transplant patients in combination with other immunosuppressants. ENVARUSUS XR is also indicated for the prophylaxis of organ rejection in kidney transplant patients converted from tacrolimus immediate-release formulations in combination with other immunosuppressants.

## **IMPORTANT SAFETY INFORMATION**

### **WARNING: MALIGNANCIES AND SERIOUS INFECTIONS**

**Increased risk for developing serious infections and malignancies with ENVARUSUS XR or other immunosuppressants that may lead to hospitalization or death**

## **CONTRAINDICATIONS**

ENVARUSUS XR is contraindicated in patients with known hypersensitivity to tacrolimus.

Please see Important Safety Information including Boxed Warning throughout and accompanying full Prescribing Information including updated Warnings and Precautions at [www.envarsusxr.com/pi](http://www.envarsusxr.com/pi) or at ENVARUSUS XR booth.



The American Society of Transplantation sincerely thanks the following companies for their generous support of the AST and its activities:

## 2024 CORPORATE AFFILIATE PARTNERS



# CURIOUS ABOUT LIVTENCITY® (maribavir)?



Visit us at our booth to learn  
about LIVTENCITY from a  
Takeda representative

Learn more at  
[LIVTENCITY.com](https://www.livtencity.com)



LIVTENCITY® and the LIVTENCITY logo™ are trademarks or registered trademarks of Takeda Pharmaceuticals International AG. Takeda® and the Takeda logo® are trademarks or registered trademarks of Takeda Pharmaceutical Company Limited. ©2023 Takeda Pharmaceuticals U.S.A., Inc. All rights reserved. 1-877-TAKEDA-7 (1-877-825-3327).  
US-MAR-0510v1.0 01/23



# Introducing AiKidney™\* More Informed Decisions.

Leslie M., kidney transplant recipient



## Elevate Personalized Patient Care

**AlloView:** First and only AI-supported tool to provide integrated view of rejection risk

**iBox:** Model to inform probability of allograft failure up to 3, 5, and 7 years<sup>1,2</sup>

## About AlloView

AlloView is a support tool provided as part of the AlloSure® Kidney Testing Services. This algorithm aggregates and analyzes multiple inputs, driven by AlloSure®, to provide personalized patient care.<sup>3</sup>



\*In development. The AiKidney suite of solutions, including AlloView and iBox, are intended to provide information to support the health care provider's assessment of a patient's post-transplant status. When using AiKidney, the clinician should make clinical decisions based on clinical data obtained about an individual patient within the scope of usual practice. The clinician is advised to use independent clinical judgment in the care of each patient as no single tool or criterion supplants clinical judgement. AlloView, in particular, is intended to inform clinicians who wish to better understand and visualize in the Electronic Medical Record (EMR) the likelihood that a solitary kidney transplant patient may have a rejection. The AiKidney suite of solutions display input data and includes a description of the underlying data used to develop the algorithm and the logic for the output

A prospective, blinded, observational, multicenter, international study designed to evaluate three different RNA signatures related to rejection and injury of transplanted kidneys. Each signature is unique and individually assessed with differing end points. Tutivia™ which identifies the post-transplant risk for acute rejection, has completed the 151 patient clinical validation. Clarava™ which assesses the pre-transplant risk for early acute rejection, will be completed in 2023, and Protega™ which reports a prognostic risk score for development of kidney fibrosis, will be finalized upon the completion of 24 month outcomes. The total study will include over five hundred patients for all time points.

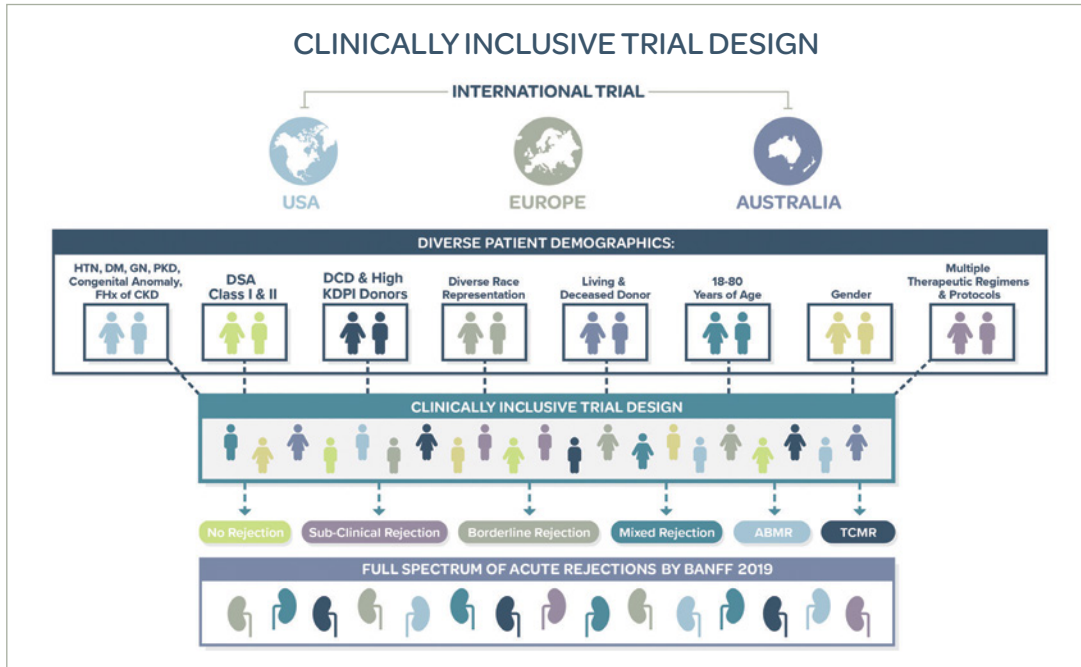


Figure 1. Importance of Clinical Study Design on Translational Utility

## Tutivia™ Clinical Validation Study Demographics

151 Unique Study Participants		Deceased Donor Recipient	100 (66%) Total
Mean/Median Recipient Age	53/53 Years	Standard Criteria Donor	51
Mean/Median Donor Age	47/46 Years	Expanded Criteria Donor	17
Male	97 (64%)	Donors after Cardiac Death	31
Female	54 (36%)	Not Answered (Deceased)	1
Race		Number of Previous Kidney Transplants/Patients	
Asian	5	0	120
Black	31	1	18
Native American	0	2	3
Pacific Islander	3	Missing	10
White	108	ABO Incompatibility	
Not Answered	4	No	147
Participation Location		Number of Patients	
USA	84	Yes	4
Europe (Italy France, Spain)	57	HLA Mis-matches (A, B, DRB1, DQB1)	
Australia	10	0-4	53
<b>Living Donor Recipient</b>	<b>51 (33%) Total</b>	5-8	73
Living Related Donor	28	Missing	25
Living Unrelated Donor	23		

Table 1. Study Population and Demographics

Thirteen centers in the US, Spain, France, Italy, and Australia are included in the results to date.

Tutivia™ utilizes a proprietary RNA next generation sequencing profile, which assesses specific genes involved in the kidney injury spectrum identifying immunologic response, direct damage to kidney tissue, and expression that provides protection to the transplanted kidney.

Tutivia™ utilizes a proprietary AI driven algorithm which produces a risk score from 0-100. Greater than 50 is interpreted as high risk for AR, while less than or equal to 50 is interpreted as low risk for AR.

Verici Dx translates a patient's individual gene expression related to rejection to produce an overall patient risk score. This individualized risk score allows the clinician to shift focus to the single individual with that particular score at that particular encounter.

A blinded central pathologist read all biopsies, with expertise in reading kidney transplant biopsies, and local pathologist readings were also collected.

The study assesses risk of AR within first 6 months post-transplant. All participants are followed out to 24 months post-transplant. All patients in the validation study were independent from the patients that comprised the training set.

One hundred and fifty-one patients studied to evaluate performance of Tutivia™ are included in the results presented here.



## WE ARE KAMADA. WE BELIEVE THAT EACH LIFE IS UNIQUE.

Established more than three decades ago, Kamada is a global biopharmaceutical company focused on developing and the distribution of innovative specialty – plasma therapies to save and improve lives around the world. We believe that each life is unique and advancing human health is at the core of everything we do.



Kamada is active in areas of high unmet medical need including transplantation, infectious disease, and hematology. We leverage our expertise and resources to improve patient outcomes in more than 30 countries worldwide.



Kamada has six FDA-approved medicines in the U.S. We support healthcare professionals and patients by offering, as part of our portfolio, a broad range of hyperimmune plasma therapies that provide passive immunity to a wide range of infectious agents.



At Kamada, we invest in scientific innovation, cutting edge technology and a strong partnership with the medical community to develop life-changing therapies and make them available to people with serious and rare diseases.

Kamada's U.S. headquarters is located in New Jersey.



Resource: Kamada corporate presentation, Sep 2022.

Kamada Inc. 221 River St. Hoboken, NJ 07030 Tel. (201)-721-8500  
©2022 Kamada Inc. All rights reserved. October 2022.



# Mallinckrodt Pharmaceuticals

Mallinckrodt is a global business consisting of multiple wholly owned subsidiaries that develop, manufacture, market and distribute specialty pharmaceutical products and therapies. The company's Specialty Brands reportable segment's areas of focus include autoimmune and rare diseases in specialty areas like neurology, rheumatology, hepatology, nephrology, pulmonology, ophthalmology, and oncology; immunotherapy and neonatal respiratory critical care therapies; analgesics; cultured skin substitutes and gastrointestinal products. Its Specialty Generics reportable segment includes specialty generic drugs and active pharmaceutical ingredients.

**To learn more about Mallinckrodt,  
visit [www.mallinckrodt.com](http://www.mallinckrodt.com).**



Visit us at  
Thymoglobulin.com

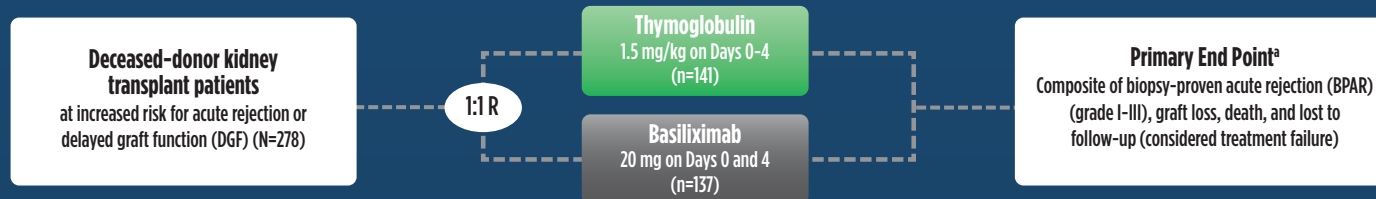


# Twenty+ Years Protecting Kidney Transplants in a Hostile Environment

## Thymoglobulin<sup>®</sup> Anti-thymocyte Globulin (Rabbit)

### Thymoglobulin Induction Demonstrated Superiority to Basiliximab in Reducing Treatment Failure<sup>1</sup>

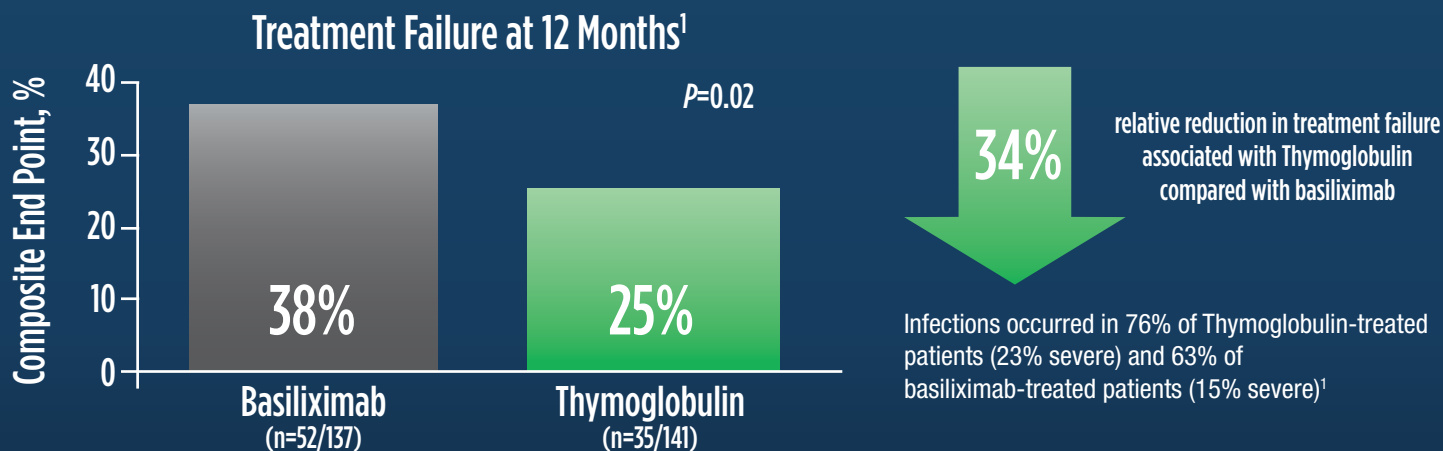
Brennan et al: Open-Label, Randomized, Active-Controlled Trial<sup>1,2</sup>



UNOS  
Analysis

Today, ~84% of deceased-donor kidney transplant patients would be considered at increased risk for acute rejection<sup>3,4</sup>

Based on the inclusion criteria of the 1010 Study in an exploratory analysis of the OPTN/UNOS database during the period of 1999-2021. Analysis performed December 3, 2021.



<sup>a</sup> The original primary end point of the trial published by Brennan et al was a composite of the first occurrence of BPAR, DGF, graft loss, or death.<sup>2</sup> The FDA filing used a new composite end point, which removed DGF and included lost to follow-up, accounting for differences in the Brennan et al data compared with the Thymoglobulin label.<sup>3</sup> The composite end point is defined as the occurrence of any of the following: BPAR (grade I-III), graft loss, death, or lost to follow-up. A patient can be counted in more than 1 category with the exception of lost to follow-up. First induction treatment was initiated prior to the reperfusion of the kidney and all patients received triple-maintenance immunosuppression involving cyclosporine, MMF, and corticosteroids. Patients were followed for 12 months or until they were withdrawn from the study or lost to follow-up.<sup>1</sup>

Thymoglobulin<sup>®</sup> (anti-thymocyte globulin (rabbit)) is indicated for the prophylaxis and treatment of acute rejection in patients receiving a kidney transplant. Thymoglobulin is to be used in conjunction with concomitant immunosuppression.

### Important Safety Information

**WARNING: IMMUNOSUPPRESSION.**  
Thymoglobulin should only be used by physicians experienced in immunosuppressive therapy in transplantation.

# DONOR

Donor Screening

HLA Testing

Microbiology Testing



PRE-TRANSPLANT TESTING

# PATIENT

Infectious Disease Testing

Treatment Optimization

Rejection Testing



POST-TRANSPLANT DIAGNOSTICS

From Pre-Transplant  
to Post Recovery

**WE'RE YOUR  
PARTNER  
THROUGH  
ALL OF IT**

From donor to recipient, the transplant journey requires precision testing every step of the way. That's exactly what we deliver. Diagnostics that inform, monitor and lead to improved long-term outcomes for patients and clinicians by providing personalized insights that can answer life and organ saving transplant questions.



Transplant Diagnostics

Four Leaders in Transplant Testing.  
**ONE NAME.**



[EurofinsTransplant.com](http://EurofinsTransplant.com)



Prospera™  
Transplant assessment

# Built for Confident Decisions

CEoT 2024 | February 22-24  
Scottsdale, AZ | Arizona Biltmore



Satellite Lunch Symposium Sponsored by Natera

## New Trifecta Study Publication: Prospera™ dd-cfDNA Upheld as a Leading Indicator for Kidney Transplant Rejection

Friday, February 23 | 11:45 AM – 1:00 PM | Arizona Biltmore | Frank Lloyd Wright Ballroom, Salons A-E



**Sanjiv Anand, MD**

Medical Director, Living Kidney Donor Program  
Transplant Nephrologist  
*Intermountain Health – Transplant Services*



**Rodolfo Batarse, MD, FASN**

President and Nephrologist  
*Desert Kidney Care*



**Jonathan Bromberg, MD, PhD**

Vice Chair for Research, Department of Surgery  
*University of Maryland*

More evidence that elevated Prospera™ cfDNA levels may be an early indication for rejection—providing reason for closer surveillance. Now, two independent cohorts support this robust trend where rises in Prospera™ cfDNA levels are correlated with molecular signs of antibody-mediated rejection.

This is not an official function of the CEoT meeting and is not endorsed by the AST. Lunch will be provided by AST.

13011 McCallen Pass, Building A Suite 100 | Austin, TX 78753 | [natera.com](http://natera.com)

Prospera™ has been developed and its performance characteristics determined by the CLIA-certified laboratory performing the test. The test has not been cleared or approved by the US Food and Drug Administration (FDA). CAP accredited, ISO 13485 certified, and CLIA certified.  
© 2024 Natera, Inc. All Rights Reserved. OH\_FLYER\_CEOt-2024\_20240126\_NAT-8021457



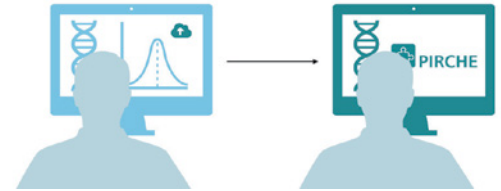


# Precision Immunology In Action

Pirche<sup>®</sup> is a fully digital epitope matching technology that relies on standard of care testing and cutting-edge artificial intelligence algorithms.

At PIRCHE, we strive to improve the lives of transplant patients by providing unparalleled decision support to medical professionals.

For more information, please contact us at: [info@pirche.com](mailto:info@pirche.com)



HLA Typings

Analysis Software

Optional API\*

**PIRCHE**<sup>®</sup>  
match better.

Epitope A.I. Report  
Generated Within Seconds

**VISIT PIRCHE.COM &  
REQUEST A DEMO TODAY!**



**AST**

AMERICAN SOCIETY OF  
TRANSPLANTATION



CUTTING EDGE of  
TRANSPLANTATION

**BACK AT  
THE WESTIN  
KIERLAND  
IN 2025**

**CEoT 2025**

**SAVE THE DATE**

FEBRUARY 27 – MARCH 1, 2025

**THE WESTIN KIERLAND  
SCOTTSDALE, AZ**



---

# FELLOWS

s y m p o s i u m

ON TRANSPLANTATION

---

◆◆ 2024 ◆◆

**SAVE  
THE  
DATE**

Hilton DFW Lakes Executive Conference Center  
**GRAPEVINE, TX • SEPTEMBER 27–29, 2024**

[myAST.org](https://myAST.org)



## *Living Donor Circle of Excellence*

### **Change Policies. Save Lives.**

A *no-cost* recognition program celebrating employers that provide paid leave for living donors.

★[LivingDonorCircle.com](http://LivingDonorCircle.com)★

The AST thanks its Founding Partner, UnitedHealth Group, as well as Strategic Partners, the Canadian Society of Transplantation, the National Kidney Foundation, The Kidney Foundation of Canada, and the American Liver Foundation, for supporting the Circle and for their work to advance this initiative.



# 2024 AST VIRTUAL RUN AND FITNESS CHALLENGE

GET HEALTHY WHILE SUPPORTING  
THE FIELD OF TRANSPLANTATION.

April 1 – May 27, 2024

You're invited to join the 2024 AST Virtual Run and Fitness Challenge! Achieve your fitness goals as an individual – or create a team with your friends, family, or colleagues. All participants will receive a t-shirt and access to our interactive race platform.

This Run and Fitness Challenge is powered by a partnership with Veloxis.



Registration Opening April 1

**AST** | AMERICAN SOCIETY OF  
TRANSPLANTATION



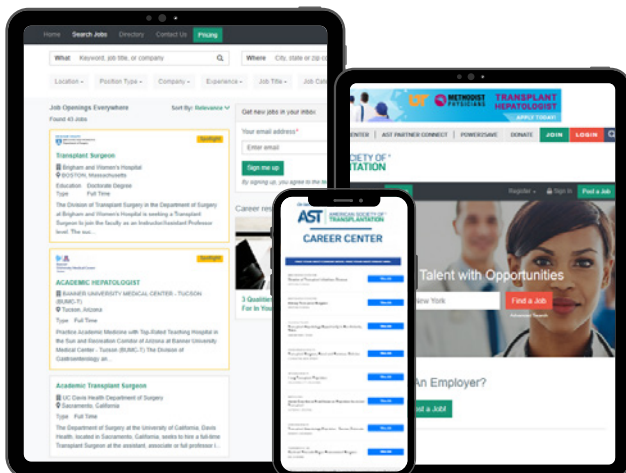
**AST CAREER CENTER**

CONNECTING TRANSPLANTATION

TALENT WITH OPPORTUNITIES

## JOB SEEKERS

Get leads on great transplantation jobs with competitive salaries through the AST Career Center, your one-stop resource for focused online job searching.



- Best source of transplant jobs
- Resume/CV critiques
- Job alerts
- Opt into *Career Information* communications in your AST account to receive the bimonthly *Job Watch* Email



# Power2Save

ONE TRANSPLANT FOR LIFE

*New in 2024*

# Become an AST Power2Save Partner

and show your support to make organ transplantation  
not just a treatment, but a cure.

Power2Save (P2S) is an initiative developed by the American Society of Transplantation (AST) dedicated to increasing public awareness around the importance of funding transplant research, organ donation, and advocating for transplant health. When you become an AST Power2Save Partner, you'll be making a direct impact on the lives of individuals who make up the broader transplant community.

Learn more about Power2Save at [Power2Save.org](https://Power2Save.org)

Your support helps AST grow the Power2Save initiative through educational resources, toolkits, program initiatives, and advocacy work on Capitol Hill.

**Power2Save Partners receive the following benefits throughout the year:**

- ▶ Recognition on the AST P2S website
- ▶ Access to pertinent public policy info
- ▶ AST P2S marketing and patient facing materials upon request
- ▶ AST and P2S social media acknowledgment twice a year
- ▶ Recognition in AST's financial report and year-end impact report to members
- ▶ AST P2S Partner badge for use on your website or marketing materials